



# CHRISTMAS MORNING *worship*

12.25.23, 10AM



Prelude

*Once in Royal David's City, Away in a Manger*

arr. C. Callahan

Welcome, Call to Worship, Lighting of the Christ Candle

---

## **GATHERING IN THE NAME OF THE LORD**

Two Opening Hymns (any well-known hymn from between #21 & #61)

Prayers of the People & The Lord's Prayer

**Our Father, who art in heaven, hallowed be thy name,  
thy kingdom come, thy will be done,  
on earth as it is in heaven.**

**Give us this day our daily bread.**

**And forgive us our debts, as we forgive our debtors.**

**And lead us not into temptation, but deliver us from evil.**

**For thine is the kingdom, and the power, and the glory, forever.**

**Amen.**

---

## **HEARING GOD'S WORD & MESSAGE**

Old Testament Reading: Isaiah 9:2-7

New Testament Reading: Luke 2:8-38

Hymn (any well-known hymn from between 21 & 61)



Hymn (any well-known hymn from between #21 & #61)

Hymn for Reflection *In the Bleak Midwinter*

Reflection for Children (happy birthday!) - Trey & Ikeke

Offertory *Sleep Now, Dear Jesus* arr. C. Callahan

---

## **RESPONDING TO GOD'S MESSAGE**

Offering & Hymn (any well-known hymn from between #21 & #61)

---

## **GOD SENDS US OUT WITH THE MESSAGE OF CHRISTMAS**

Sending Hymn *Go Tell It On A Mountain*

Benediction

Postlude *Go Tell It on the Mountain*



**MERRY CHRISTMAS AND HAPPY  
HOLIDAYS TO ALL!**





# SLEEP NOW, DEAR JESUS

## SUANTRAÍ NA MAIGHDINE

"Sleep Now, Dear Jesus"

Adam M. L. Tice

"Suantraí Na Maighdine"

Trad. Irish

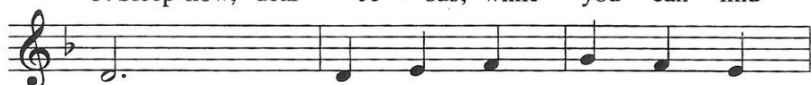
SUANTRAÍ

Trad. Irish

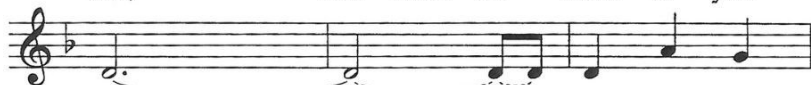
Arr. Ian Callanan



1. Mar - y sings soft - ly to wel - come her  
2. Heav - en and earth in one bod - y, so  
3. Sleep now, dear Je - sus, while you can find



boy af - ter the la - bor of  
small, wel - comed by shep - herds and  
rest, safe where the straw is your



birth. Ga - bri - el's  
sheep; God's love in -  
bed. Home - less and



greet - ing, E - liz - a - beth's joy,  
car - nate, new life born for all,  
hunt - ed and put to the test,



choirs that pro - claim "Peace on earth,"  
Mar - y will sing you to sleep.  
you will find trou - ble a - head.



ring as ech - oes that blend in the  
You have come to the hum - ble, the  
But your moth - er will faith - ful - ly



still of the night, join - ing with  
poor and op - pressed, shak - ing the  
stay by your side, fac - ing vour

Mar - y's "My soul mag - ni - fies." And the  
 rul - ers, the wealth - y and strong. Peo - ple  
 suf - f'ring with cour - age and grace. As she  
 one who in - toned the first "Let there be  
 long cast a - side, you will wel - come as  
 rocks you to - night with a new par - ent's  
 light". now greets cre - a - tion and  
 blessed, teach - ing the world Mar - y's  
 pride, you bring earth heav - en's em -  
 D.C.  
 cries.  
 song.  
 brace.

English Words Copyright © 2023 GIA Publications, Inc. • All rights reserved

## In the Bleak Midwinter

CRANHAM Irregular

Christina Rossetti, c. 1872; alt.

Gustav Theodore Holst, 1906

4. What can I give Him, Poor as I am?  
 If I were a shep - herd, I would bring a lamb;  
 If I were a wise man, I would do my part;  
 Yet what I can I give Him: Give my heart.



# Go, Tell It on the Mountain

GO TELL IT 7.6.7.6 with refrain

African-American spiritual  
Arr. John W. Work III, 1940

Stanzas, John W. Work II (1872-1925)

Harm. and adapt. Melva Wilson Costen, 1987

*Refrain*

Go, tell it on the moun - tain O-ver the hills and ev - ery - where;

*Fine*

Go, tell it on the moun - tain That Je - sus Christ is born!

1. While shep-herds kept their watch-ing O'er si - lent flocks by night,  
2. The shep-herds feared and trem-bled When lo! a - bove the earth,  
3. Down in a low - ly man-ger The hum-ble Christ was born,

*D.C.*

Be - hold through-out the heav-ens There shone a ho - ly light.  
Rang out the an-gel cho - rus That hailed our Sav - ior's birth.  
And God sent us sal - va - tion That bless - ed Christ-mas morn.

*We wish each of you a blessed  
week, until we meet again.*



**Minister:** Rev. Trey Tirpak  
**Organist:** Iteke Prins

CCLI License #463379; One License #A-700689



# 2023 DECEMBER



SUN	MON	TUE	WED	THU	FRI	SAT
<b>17</b>  <i>T</i> joy	<b>18</b> 	<b>19</b>  Castle Island Talent Show & Potluck Lunch 10am-1pm Zimmerman	<b>20</b>  AA	<b>21</b>  	<b>22</b>	<b>23</b>
<b>24</b> Morning 10am  Candlelight Service 7pm followed by Wassail <i>T</i> love	<b>25</b> Christmas Christmas Morning Worship 10am in the Chapel  Pantry & Office Closed	<b>26</b>	<b>27</b>  AA	<b>28</b> 	<b>29</b>	<b>30</b>
<b>31</b>  	<b>Key:</b>  Indoor Worship 10am  Communion Sunday  Coffee Hour  Pantry 9am  Centering Prayer 12pm  Book Study  Soup & PB&J 11:30am  Choir Rehearsal					

**Preacher:** *M* Rev. Dr. Mashona Walston *T* Rev. Trey Tirpak *G* Guest

**YOUR FIRST CHURCH  
STAFF AND PASTORS WISH YOU**

*a Blessed  
Christmas*



*Not pictured: Kim Reohr*



## **First Church in Albany**

110 North Pearl St.  
Albany NY 12207  
518-463-4449

[www.firstchurchinalbany.org](http://www.firstchurchinalbany.org)